

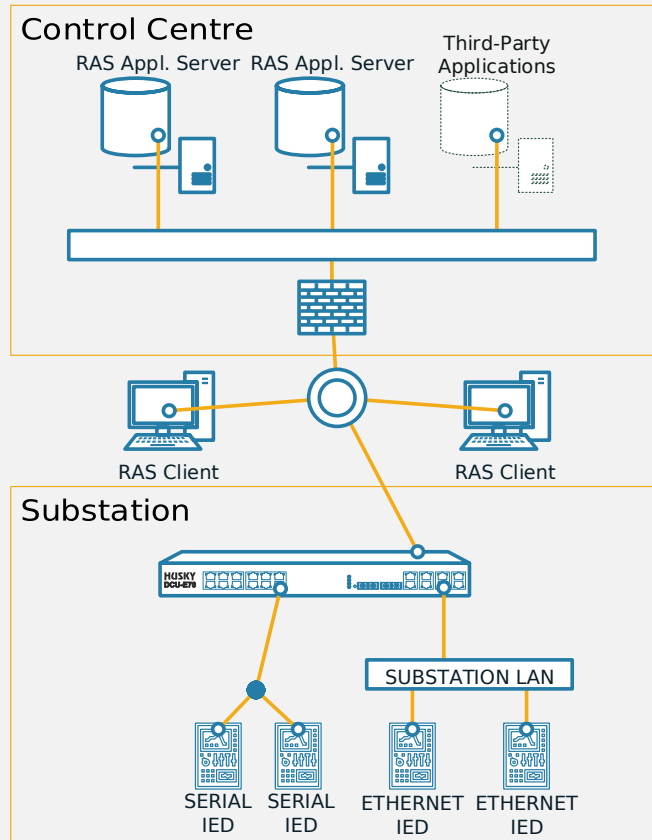
Remote Accessibility System (RAS) for Substations

What is RAS

Modern day substations have numerical protection relays, bay control units (BCU), and other IEDs like event loggers, disturbance recorders, transformer monitoring systems.

Present day concerns of a power utility include, centralized monitoring requiring better visibility of the status and functioning of these IEDs, as well as restricting access to these IEDs.

RAS provides a solution to achieve centralized monitoring, management of substation IEDs in a secure manner.



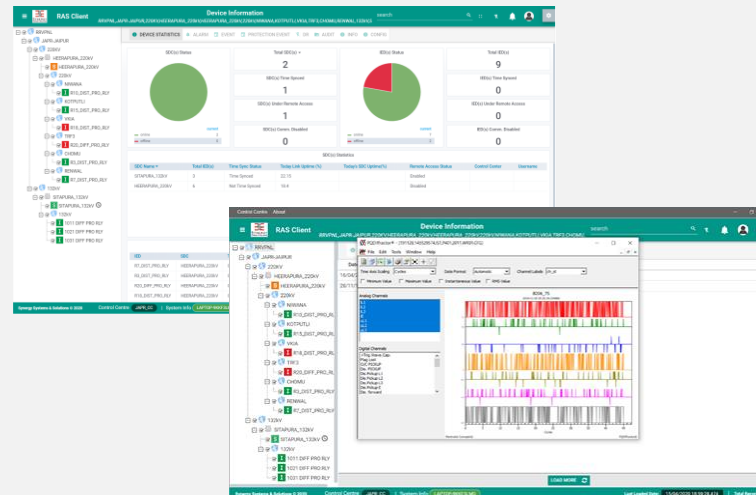
Our Solution

SSS' solution consists of two products from its portfolio -

HUSKY DCU functions as Substation Data Concentrators (SDC), and provides the necessary communication interfaces as well as the protocol intelligence to communicate with the IEDs, for data acquisition. The SDC also acts as the secure perimeter gateway to a substation, providing secure and authorized access to the substation IEDs.

SIRIUS RAS application software, which resides at the Control Centre, centrally manages the communications with the SDCs. The application servers process and store the data acquired from the SDCs, while the clients are used by utility personnel to perform various functions like -

- Viewing Disturbance & Event data
- Viewing status of SDCs, and IEDs
- Enable access to IED's configuration ports
- Manage users and their roles, credentials
- Maintain audit log of user activities



Features

Data Acquisition

- Makes IED data available centrally at utility's operations center
- Automatic Disturbance Record Acquisition
- Conversion to standard COMTRADE format
- Sequence-of-Event Recording

Electronic Security Perimeter

- Provides a security perimeter and single point of access to the substation IEDs
- Secure communications over a VPN

Authorized Remote Access

- Enables secure and authorized access to substations IEDs remotely and locally
- Allows authorized personnel to parameterize or configure a substation's IEDs.

IED Asset Management

- Maintains substation-wise IED inventory
- Maintains versioned history of each IED's configuration files.